



Tonya D. Estep McGuire,
Public Health Epidemiologist,

*Athens, City of Ironton, Gallia, Hocking,
Lawrence, Meigs, Ross, and Vinton County
Health Departments*

BED BUGS & SCABIES:

Truths, Myths, & Other Good Things to Know

BED BUG TEST



WHAT ARE BED BUGS?

1. Small winged insects that belong to the family *Cimicidae*
2. Small wingless insects that belong to the order Acarina
3. The larvae of a type of mite
4. None of the above



HOW BIG ARE ADULT BED BUGS?

× 1/16 inch

× 1/4 inch

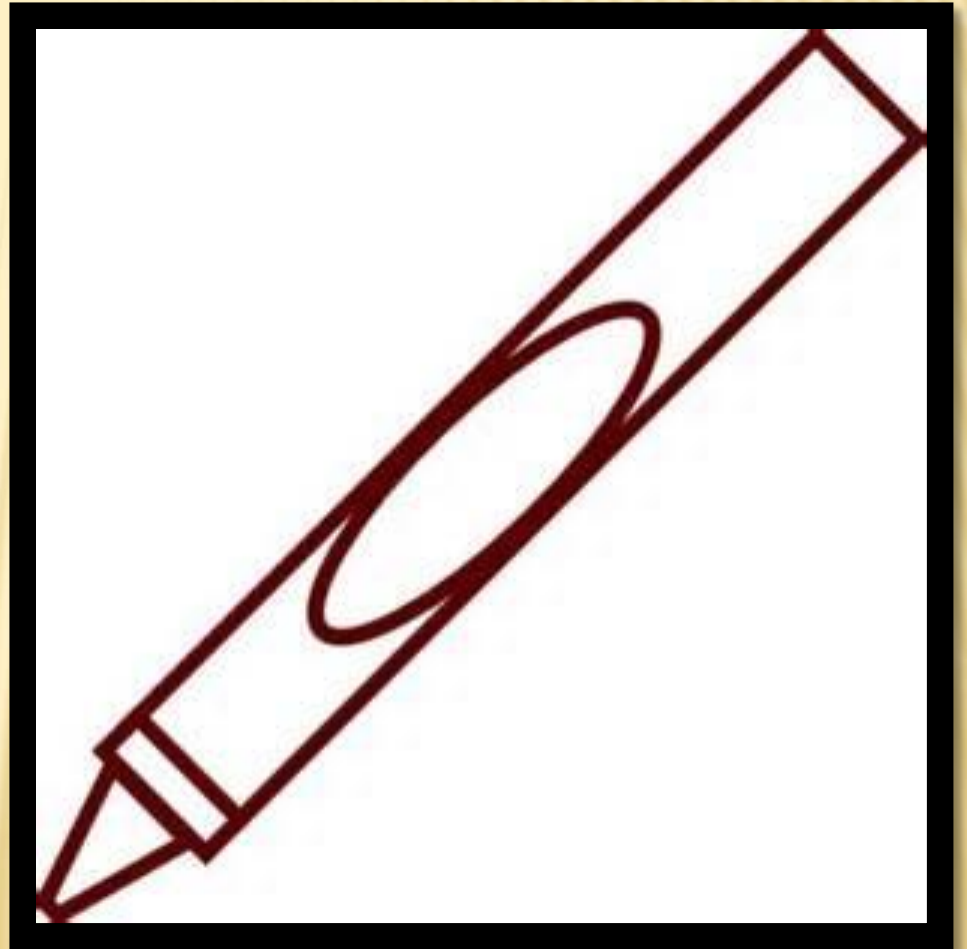
× 1/2 inch

× 3/4 inch



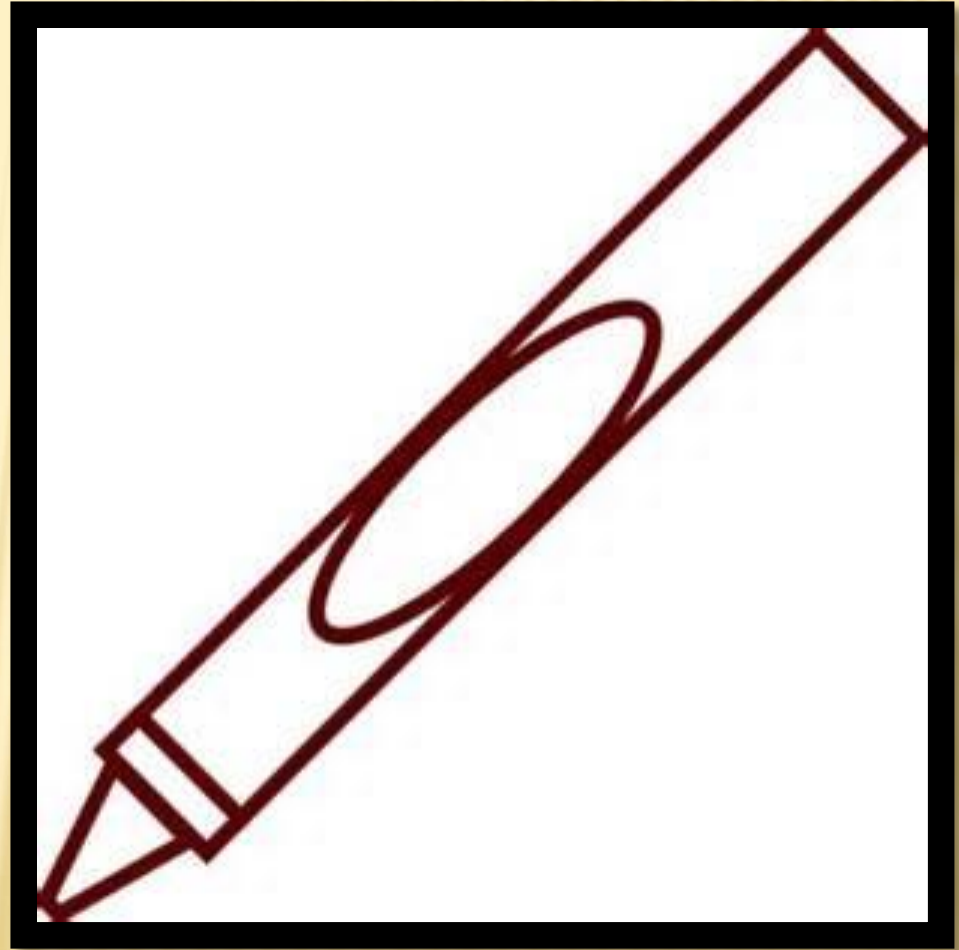
WHAT COLOR ARE ADULT BED BUGS?

1. Light grey
2. Black
3. Reddish brown
4. Black



WHAT COLOR ARE BED BUG NYMPHS?

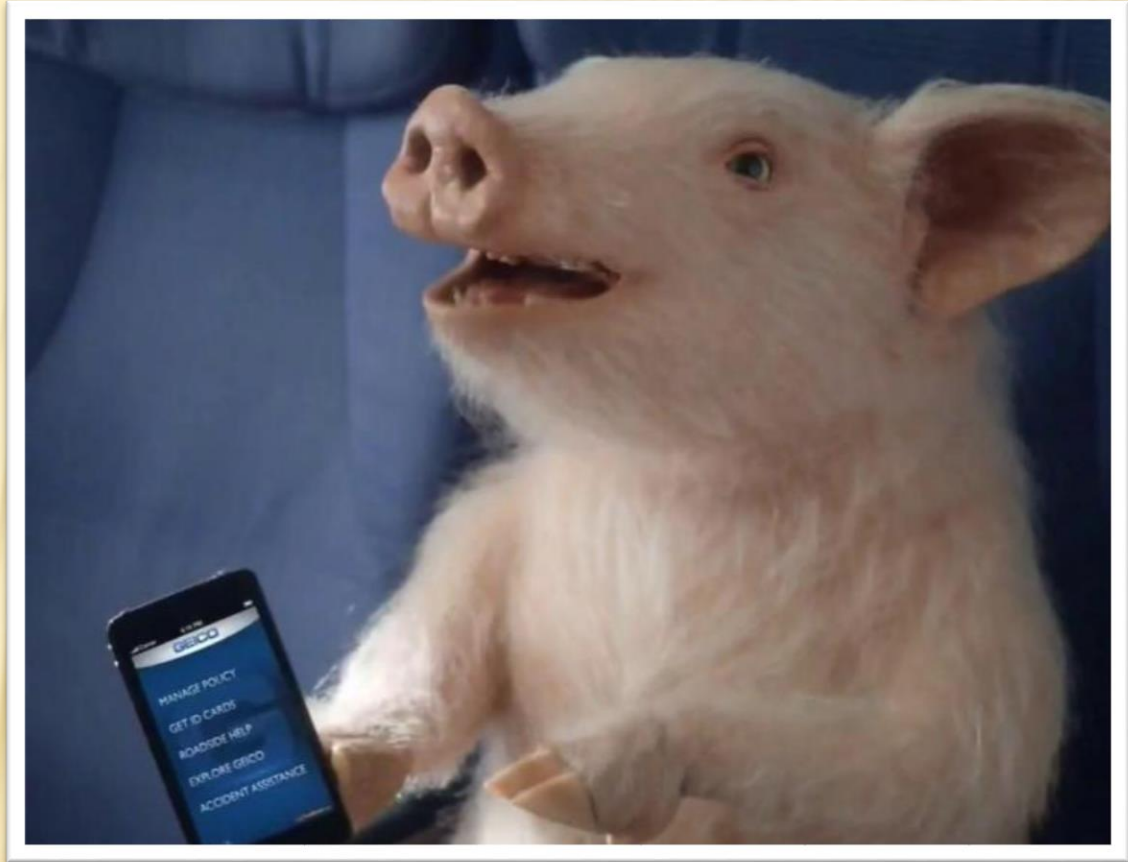
1. Light grey
2. Black
3. Reddish brown
4. Clear





CAN BED BUGS FLY?

- ✘ YES!
- ✘ Only in certain life stages
- ✘ NO!



WHAT FACTORS ARE CAUSING THE RECENT INCREASE IN BED BUG INFESTATIONS?

- ✗ Restrictions on the use of some pesticides
- ✗ Increases in travel and immigration
- ✗ None of the above
- ✗ 1 and 2



WHAT ARE THE SIGNS AND SYMPTOMS OF BEDBUG BITES?

1. Raised bumps on the skin
 2. Little blisters
 3. A spreading rash
 4. There are none





HOW CAN A BEDBUG INFESTATION BE DETECTED?

1. Find rust colored stains on sheets, etc.
2. Locate egg cases in crevices or near bed
3. 1 and 2
4. None of the above

WHAT IS A METHOD TO HELP REMOVE BEDBUGS FROM THE HOME?

1. Use bug bombs in the bedroom
2. Scrub infested surfaces with a stiff brush
3. 1 and 2
4. None of the above



WHAT'S THE BEST WAY TO PREVENT BEDBUG BITES IN HOTELS?

1. Search for signs of bedbugs
2. Wear insect repellent to bed
3. Bring your own sheets
4. None of the above



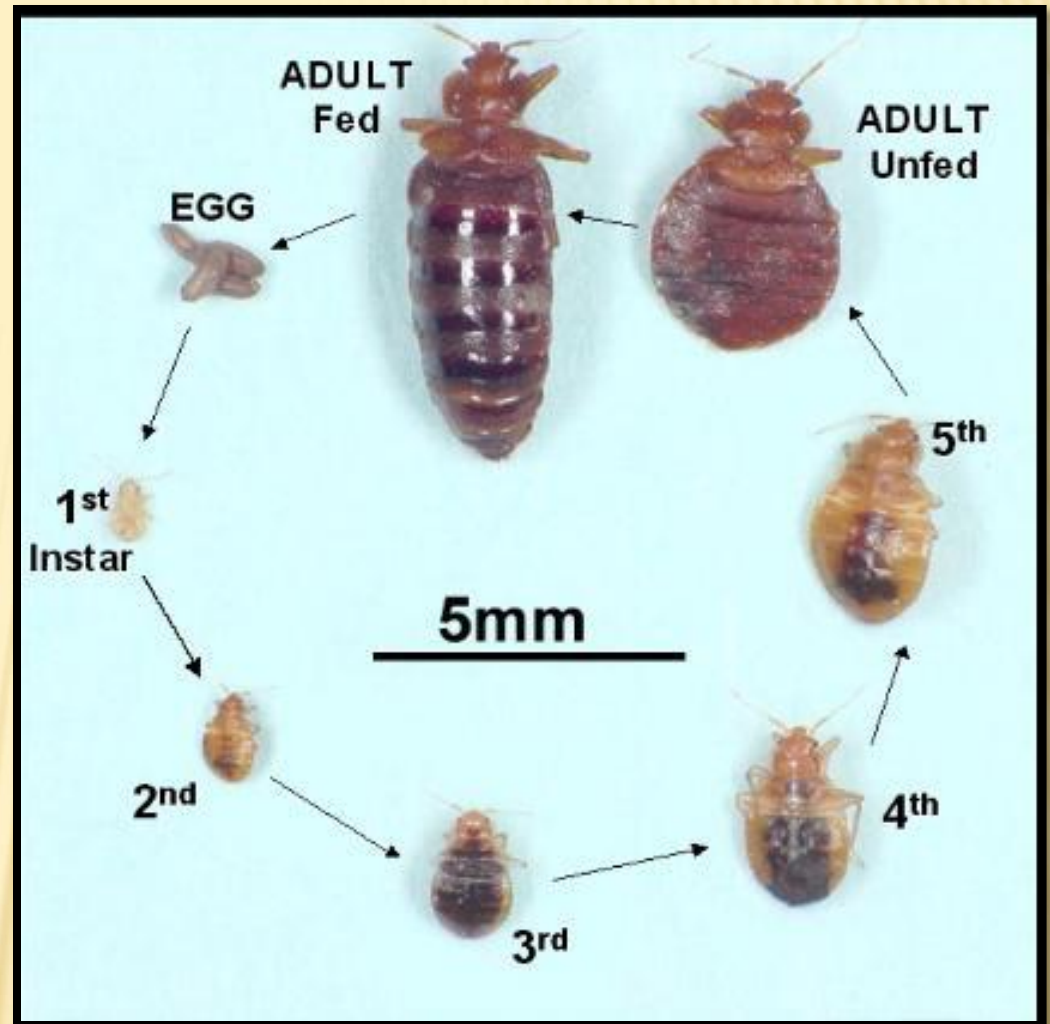
BEDBUGS NEED A BLOOD MEAL AT LEAST ONCE A WEEK.

1. True

2. False



1. Egg
2. Nymphs
 - 5 stages
3. Adult



LIFE CYCLE OF BED BUGS

MOST BEDBUG INFESTED (JANUARY 2015 RANKINGS):

1. Chicago, IL
2. Detroit, MI
3. Columbus, OH
4. Los Angeles, CA
5. Cleveland/Akron/Canton, OH
6. Dallas/Fort Worth, TX
7. Cincinnati, OH
8. Denver, CO
9. Richmond/Petersburg, VA
10. Dayton, OH

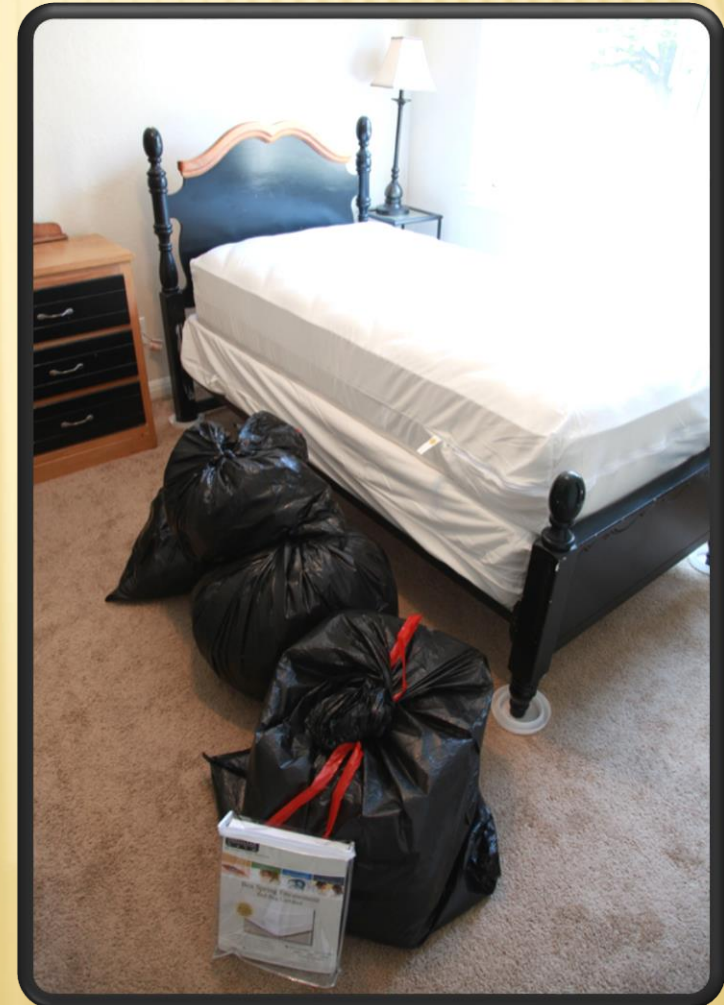
BED BUG RESOURCES

✘ Websites:

- + Centers for Disease Control and Prevention: Bed Bugs
- + U.S. EPA Bed Bugs: Get Them Out and Keep Them Out
- + Central Ohio Bed Bug Task Force
- + Texas A & M
- + NYC Health

DIY STRATEGIES (PROFESSIONAL HELP RECOMMENDED)

- Make sure it's really bed bugs
- Determine which rooms are infested
- Don't throw away bed, couch or other furniture
- STAY in your own bed, making it a safe place to sleep, so the bed bugs don't follow you to other parts of the home
- Systematically eliminate bed bugs in every room of your home that is infested:
 - Clean;
 - Inspect; or
 - Treat
- Diatomaceous earth dust and Insecticides
 - No foggers
 - Must be applied directly to the bed bugs and their hiding places



BED BUG STRATEGIES FOR WORK

- ✘ Intake procedures for patients
- ✘ Storage of personal items of patients
- ✘ Do not bring your personal items into suspected area-take as little as possible
- ✘ Do not sit and remain in middle of room
- ✘ Shake out clothes and inspect yourself before returning to your car or office
- ✘ Change of clothes and shoes and bag others before going home to launder and dry

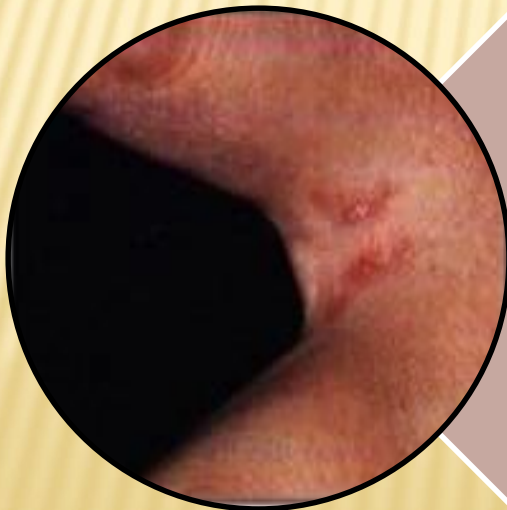
HOW TO NOT BRING HOME MORE THAN MEMORIES FROM YOUR VACATION:



SCABIES



Itching and a papular skin rash caused by sensitization (a type of “allergic” reaction) to the proteins and feces of the parasite

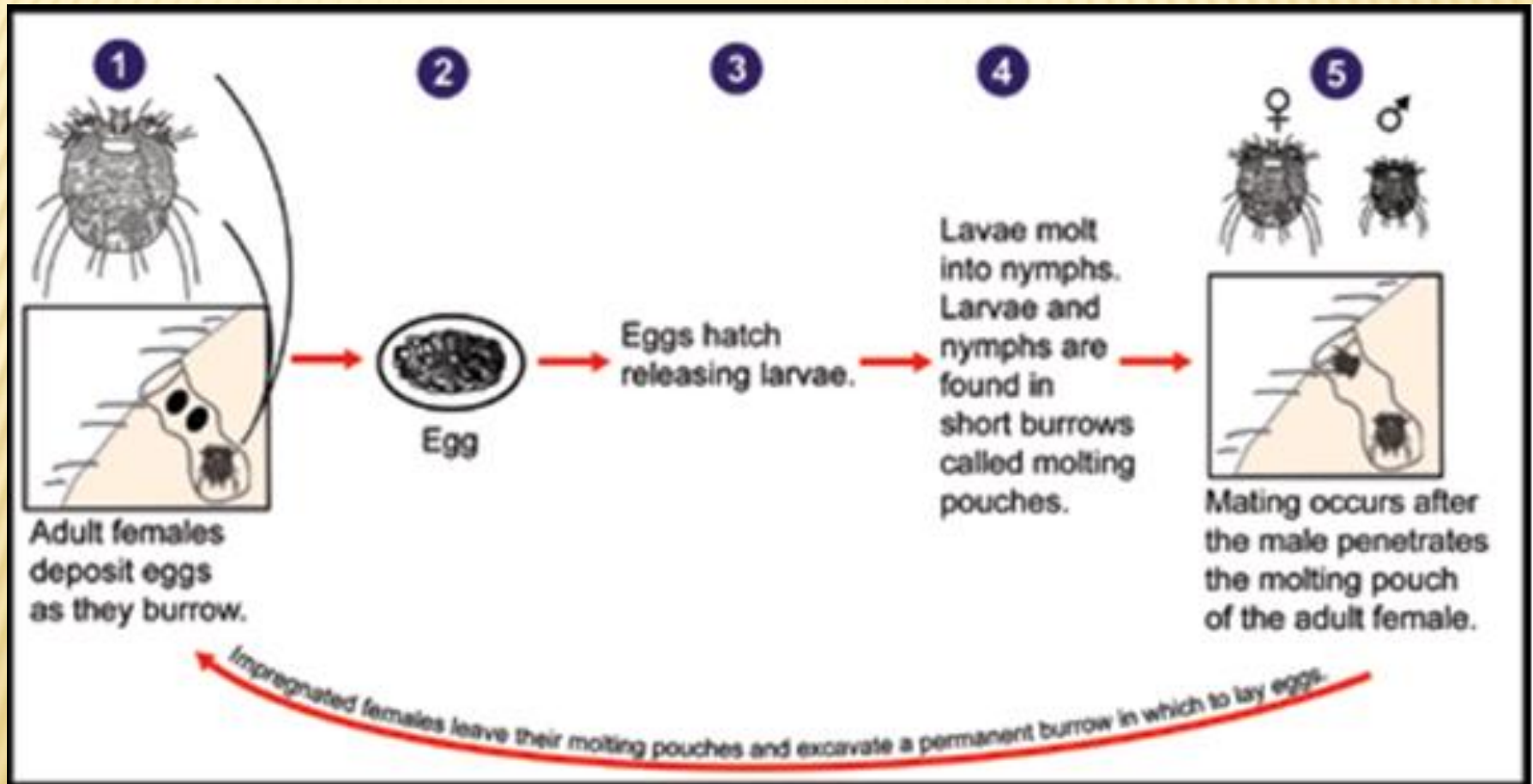
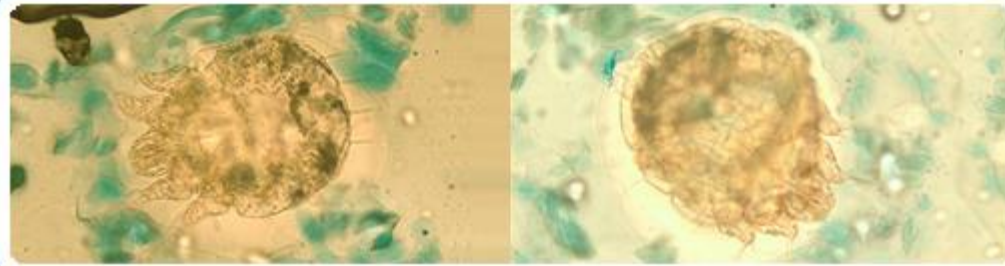


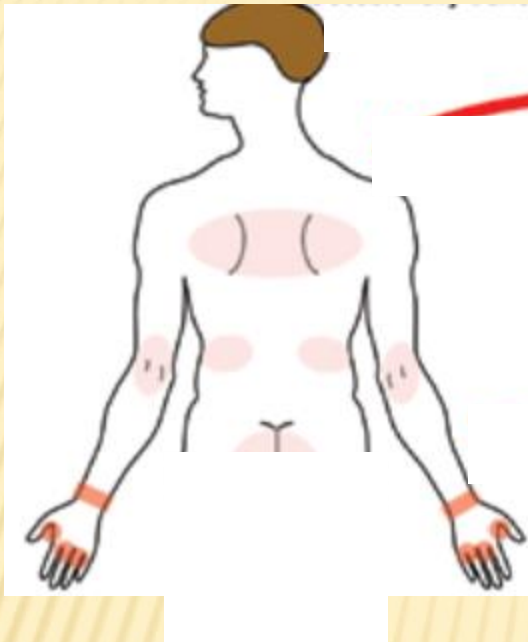
Common rash sites are between fingers, wrists, waist, and armpits

SCABIES

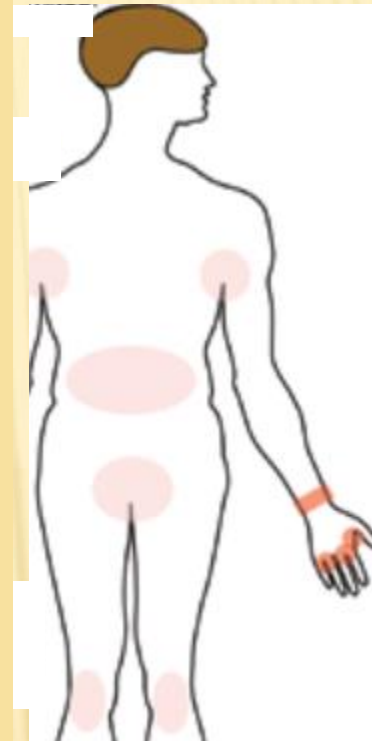
- ✘ Symptoms usually do not appear for up to two months after being infested
- ✘ Infested person still can spread scabies during this time even though no symptoms
- ✘ If a person has had scabies before, symptoms appear much sooner (1-4 days) after exposure
- ✘ An infested person can transmit scabies, even if they do not have symptoms, until they are successfully treated and the mites and eggs are destroyed
- ✘ Crusted Scabies







Scabies is a common condition found worldwide; it affects people of all races and social classes. Scabies can spread easily under crowded conditions where close body and skin contact is



Institutions such as nursing homes, extended-care facilities, and prisons are often sites of scabies outbreaks. Child care facilities also are a common site of scabies infestations.

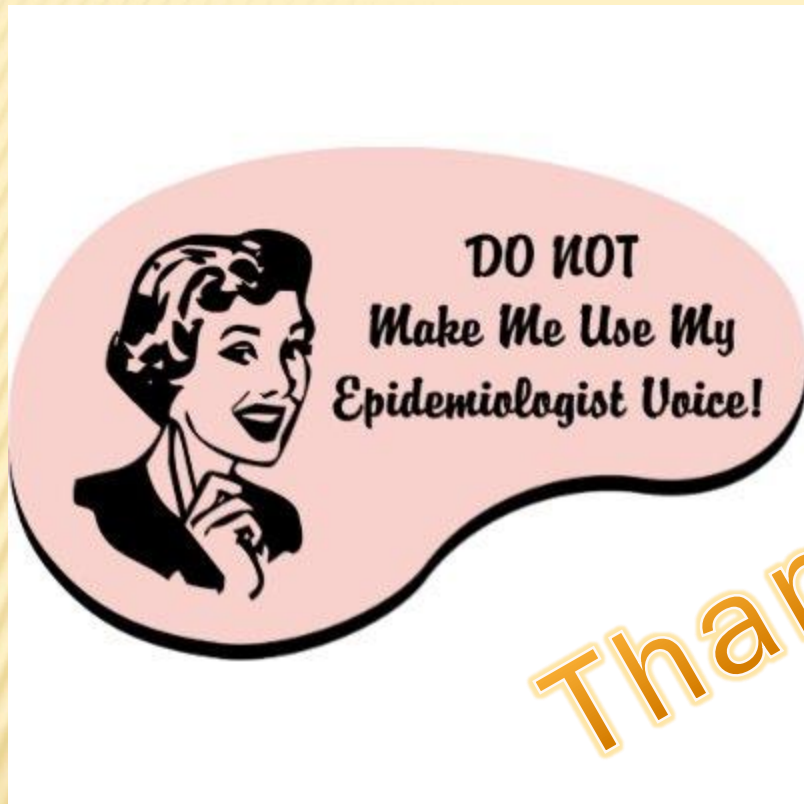






WHAT SHOULD INSTITUTIONS DO?

- ✘ Surveillance
 - + Consider scabies as the cause of undiagnosed skin rash
 - + Screen all new patients and staff
- ✘ Diagnostic Services
- ✘ Control and Treatment
- ✘ Environmental Procedures
- ✘ Ongoing Communication and Education



Thank you!

